



Inspection and Technical Services Manitoba
500 - 401 York Avenue
Winnipeg Manitoba R3C 0P8
T (204) 945-3373
F (204) 948-2309
www.firecomm.gov.mb.ca/codes_steam_pressure.html

March 16, 2015

Anric Enterprises Inc.
Suite 202-701 Evans Ave.
Toronto, ON
M9C 1A3

Attn: Alicia Czerniawski

REGISTRATION OF DESIGN

Manufacturer: CP Industries

The design(s) for the following Boiler/Pressure Vessel/Heat Exchanger has been received by us and has been examined and accepted for registration in the Province of Manitoba as follows.

MAIN DRAWING	REVISION	CRN	PRESSURE	TEMPERATURE	FILE
531D-300390	1	R1130.54	3600 psi	15°C	34918
531D-201090	00				
531E-101090	00				

An invoice covering survey and registration fees is enclosed.

NOTE: *CRN registered under reciprocal agreement & is conditional based on compliance with the notes set by the original issuing Jurisdiction: TSSA.*

In addition to stamping every vessel with the registration number given above, and as required by CSA Code B51, a **Manufacturer's Data Report** must be forwarded to this office immediately at the time a unit is shipped to Manitoba.

The registration of this design does not relieve the manufacturer, the owner or his agent of the responsibility for the design or construction of a boiler, pressure vessel, or fired heater coil in accordance with the applicable Acts, Codes and Standards. Inspection and Technical Services assumes no responsibility by registering designs, examining plans and/or inspecting equipment or facility.

Yours truly,

Rabie Harb, E.I.T.
Design Surveyor
Office of the Fire Commissioner
Inspection and Technical Services Manitoba
500 - 401 York Avenue
Winnipeg, Manitoba, R3C 0P8
Phone: 204-945-3373
Email: rabie.harb@gov.mb.ca

MATERIAL	CHEMICAL COMPOSITION IN PERCENT								MECH. PROPERTIES				Y/T. RATIO (FOR DESIGN)	TEST PRESSURE	37.2 MPa 372 BAR	BURST PRESSURE	
	C.	Si.	Mn.	P.	S.	P+S	Mo.	Cr.	T.S.		Y.S. (MIN)						ELONGATION
34CrMo4	0.31	0.10	0.50	0.015	0.010	0.020	0.15	0.90	Kgf/mm ²	N/mm ² (MPa)	Kgf/mm ²	N/mm ² (MPa)	GL.5.65√So	0.90 (MAX)	WORKING PRESSURE AT 15°C	24.8 MPa	55.8 MPa
	0.38	0.40	0.80	(MAX)	(MAX)	(MAX)	0.30	1.20	103.9-112	1020 -1100	87.6	860	14% (MIN)			248 BAR	558 BAR

DESIGN, MANUFACTURING, TESTING, ACCEPTANCE

AS PER ANSI NGV 2

MANUFACTURING PROCESS : HOT SPINNING OF SEAMLESS STEEL TUBE.

HEAT TREATMENT - QUENCHED & TEMPERED

HARDENING AT : 860°C ± 30°C - 30 Minute (Min)

TEMPERING AT : 570°C ± 30°C - 45 Minute (Min)

HARDNESS RANGE : 295 - 330 BHN

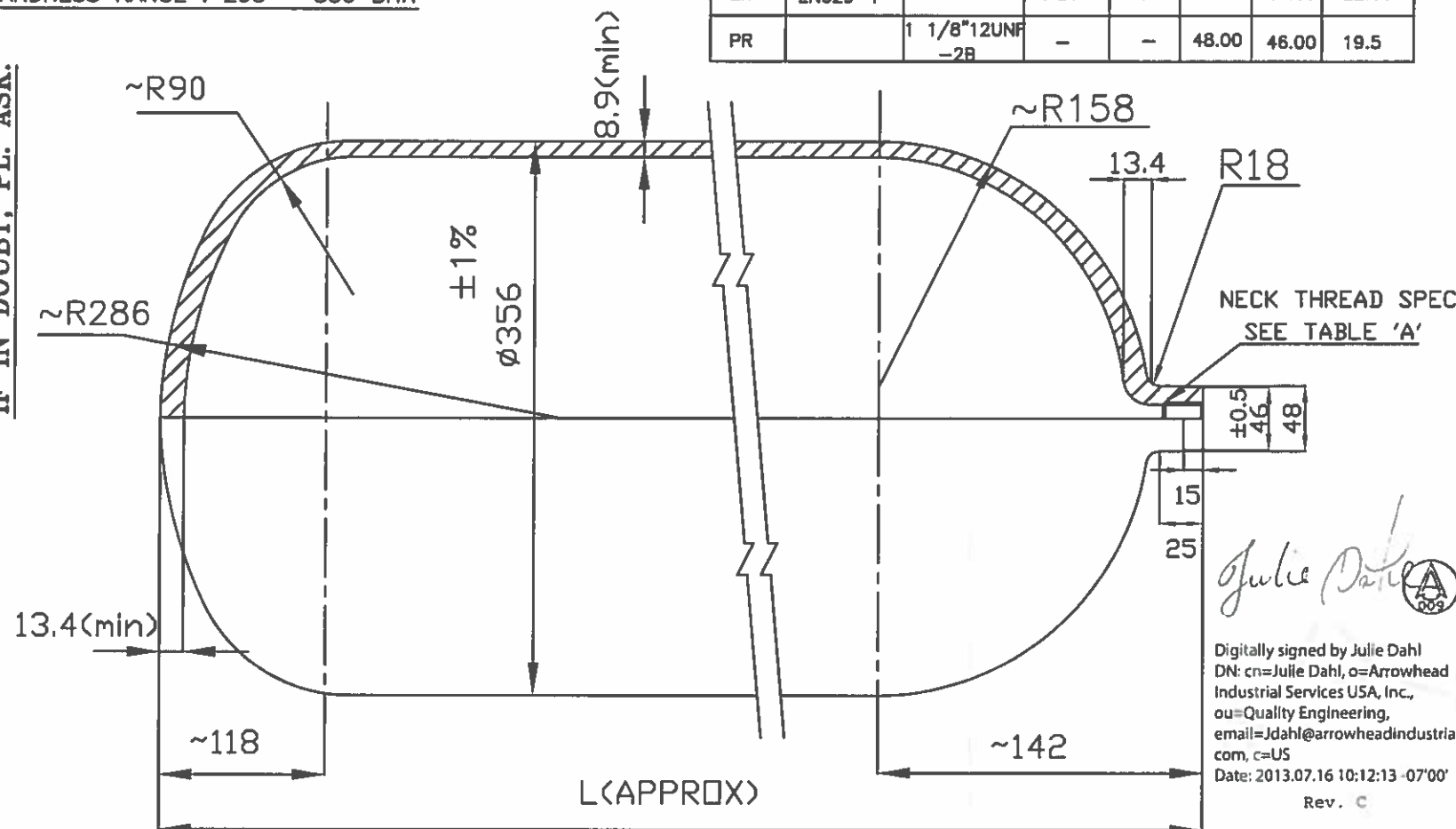
NOTE:- ALL DIMENSIONS ARE IN MM.

THREAD SPECIFICATION TABLE--'A'							
CODE	STD.	TYPE	TAPER ON DIA	PITCH	NECK DIA(D)	NECK DIA(d)	THREAD LENGTH
NG		(3/4"-NGT)	1:16	14,TPI	48.00	46.00	18.00
DN	(DIN-477)	28.8	3:25	14,TPI	48.00	46.00	22.00
EN	EN629-1	25E	3:25	14,TPI	48.00	46.00	22.00
PR		1 1/8"12UNF-2B	-	-	48.00	46.00	19.5



This is the exclusive property of Everest Kanto Cylinder Ltd. & should not be issued or transferred to any individuals or firms use for any purpose other than intended. This should not be copied, traced, modified, sketched, printed, reproduced in any manner what so ever either or full & should be returned to Everest Kanto Cylinder Ltd. When done with.

IF IN DOUBT, PL. ASK.



/P	180.0	173.0	2175
/O	170.0	182.0	2065
/N	160.0	173.0	1950
/M	150.0	163.0	1840
/L	140.0	154.0	1725
/K	130.0	144.0	1610
/J	120.0	135.0	1500
/I	110.0	125.0	1385
/H	100.0	116.0	1270
/G	90.0	106.0	1155
/F	85.0	101.0	1095
/E	80.0	97.0	1040
/D	75.0	92.0	985
/C	60.0	78.0	820
/B	55.0	73.0	760
SUFFIX TO DRG NO	NOMINAL WATER CAPACITY LTR.	TARE. WT. Kg. (APPROX)	LENGTH 'L' mm (APPROX)

Digitally signed by Julie Dahl
DN: cn=Julie Dahl, o=Arrowhead Industrial Services USA, Inc., ou=Quality Engineering, email=Jdahl@arrowheadindustrial.com, c=US
Date: 2013.07.16 10:12:13 -07'00'
Rev. C

01	Thread 1 1/8"12UNF-2B & Water Capacity 110-180 Ltrs added	13.07.2013	Ayush	V.K.K
RevNo	Revision note	Date	Checked	Approved

Itemref	Quantity	material	---	Article No./Reference
Designed by	Checked by	Approved by - date	File Name	Date
Jaspal	Ayush	V.K.K	356X8.9 ANSI NGV-2	9/10/2012
Owner	EKC		Title/Name	Scale
			ø356 x 8.9 SEAMLESS GAS CYLINDER	N.T.S.
			Drawing number	
			531D-300390	

MATERIAL	CHEMICAL COMPOSITION IN PERCENT								MECH. PROPERTIES				Y/T. RATIO (FOR DESIGN)	TEST PRESSURE	5400 psig 372 BAR	BURST PRESSURE	
	C.	Si.	Mn.	P.	S.	P+S	Mo.	Cr.	T.S.		Y.S. (MIN)						ELONGATION
34CrMo4	0.31	0.10	0.50	0.015	0.010	0.020	0.15	0.90	ksi	N/mm ² (MPa)	ksi	N/mm ² (MPa)	GL.5.65√So	0.90 (MAX)	WORKING PRESSURE AT 15°C	3600 psig	8100 psig
	0.38	0.40	0.80	(MAX)	(MAX)	(MAX)	0.30	1.20	143.5	990	121.8	840	14% (MIN)			248 BAR	558 BAR

DESIGN, MANUFACTURING, TESTING, ACCEPTANCE

NOTE:- ALL DIMENSIONS ARE IN MM/INCHES

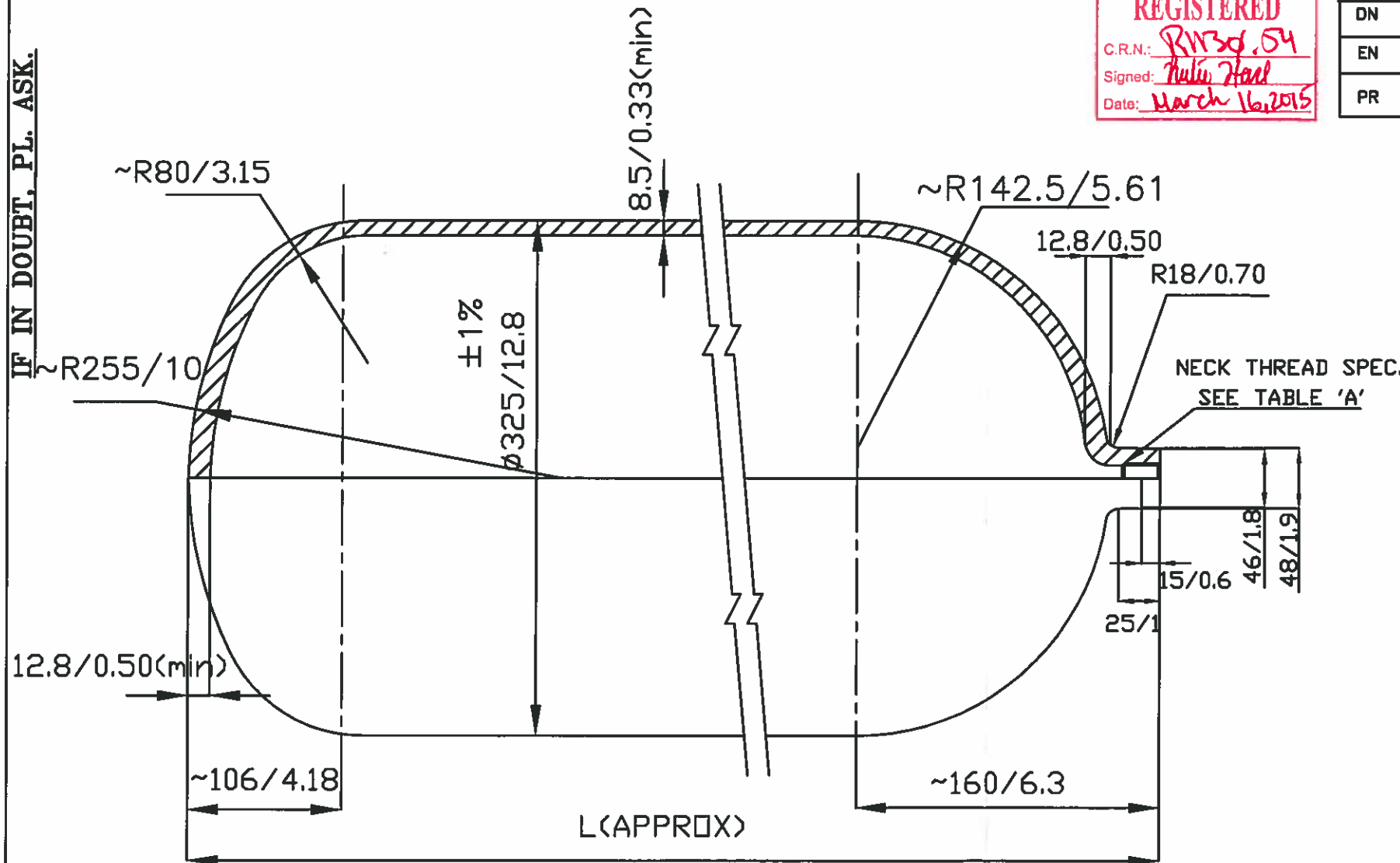
AS PER ANSI NGV 2

MANUFACTURING PROCESS : HOT SPINNING OF SEAMLESS STEEL TUBE.

THREAD SPECIFICATION TABLE-'A'							
CODE	STD.	TYPE	TAPER ON DIA	PITCH	NECK DIA(D)	NECK DIA(d)	THREAD LENGTH
NG		(3/4"-NGT)	1:16	14,TPI	48.00	46.00	18.00
DN	(DIN-477)	28.8	3:25	14,TPI	48.00	46.00	22.00
EN	EN629-1	25E	3:25	14,TPI	48.00	46.00	22.00
PR		1 1/8"12UNF-2B	-	-	48.00	46.00	19.5

Inspection & Technical Services
Manitoba
Manitoba REGISTERED
Office of the Fire Commissioner
C.R.N.: *R1750.54*
Signed: *Julian Ford*
Date: *March 16, 2015*

IF IN DOUBT, PL. ASK.



/P	140.0	167.0/368	2045/80.52
/O	130.0	157.0/346	1910/75.20
/N	120.0	146.0/322	1770/69.69
/M	110.0	136.0/300	1630/64.18
/L	100.0	126.0/278	1495/58.86
/K	90.0	115.0/254	1355/53.35
/J	85.0	110.0/243	1290/50.74
/I	80.0	105.0/232	1220/48.04
/H	75.0	99.0/218	1150/45.28
/G	70.0	94.0/207	1080/42.52
/F	65.0	89.0/196	1010/39.77
/E	60.0	84.0/185	945/37.21
/D	55.0	78.0/172	875/34.45
/C	51.0	74.0/163	813/32.00
/B	50.0	73.0/161	805/31.70
/A	49.0	72.0/159	787/31.00
SUFIX TO DRG NO	NOMINAL WATER CAPACITY LTR.	TARE.WT.Kg/Lbs. (APPROX)	LENGTH'L'mm/inch (APPROX)

This is the exclusive property of Everest Kanto Cylinder Ltd. & should not be issued or transferred to any individuals or firms use for any purpose other than intended. This should not be copied, traced, modified, sketched, printed, reproduced in any manner what so ever either or full & should be returned to Everest Kanto Cylinder Ltd. When done with.

RevNo	Revision note	Date	Checked	Approved

Designed by	Checked by	Approved by - date	File Name	Date	Scale
			325X8.5 ANSI NGV-2	12-04-2014	N.T.S.
Owner			Title/Name		
			#325/12.8 x 8.5/0.33 SEAMLESS GAS CYLINDER		
			Drawing number		531D-201090

EKC INTERNATIONAL-DUBAI

MATERIAL	CHEMICAL COMPOSITION IN PERCENT								MECH. PROPERTIES				Y/T. RATIO (FOR DESIGN)	TEST PRESSURE	5400 psig 372 BAR	BURST PRESSURE	
	C.	Si.	Mn.	P.	S.	P+S	Mo.	Cr.	T.S.		Y.S. (MIN)						ELONGATION
34CrMo4	0.31	0.10	0.50	0.015	0.010	0.020	0.15	0.90	ksi	N/mm ² (MPa)	ksi	N/mm ² (MPa)	GL.5.65√So	0.90 (MAX)	WORKING PRESSURE AT 15°C	3600 psig	8100 psig
	0.38	0.40	0.80	(MAX)	(MAX)	(MAX)	0.30	1.20	143.5	990	121.8	840	14% (MIN)			248 BAR	558 BAR

DESIGN, MANUFACTURING, TESTING, ACCEPTANCE, AS PER ANSI NGV 2
 MANUFACTURING PROCESS : HOT SPINNING OF SEAMLESS STEEL TUBE

IF IN DOUBT, PL. ASK.

HEAT TREATMENT - QUENCHED & TEMPERED

HARDENING AT : 860°C ± 30°C - 30 Minute (Min)

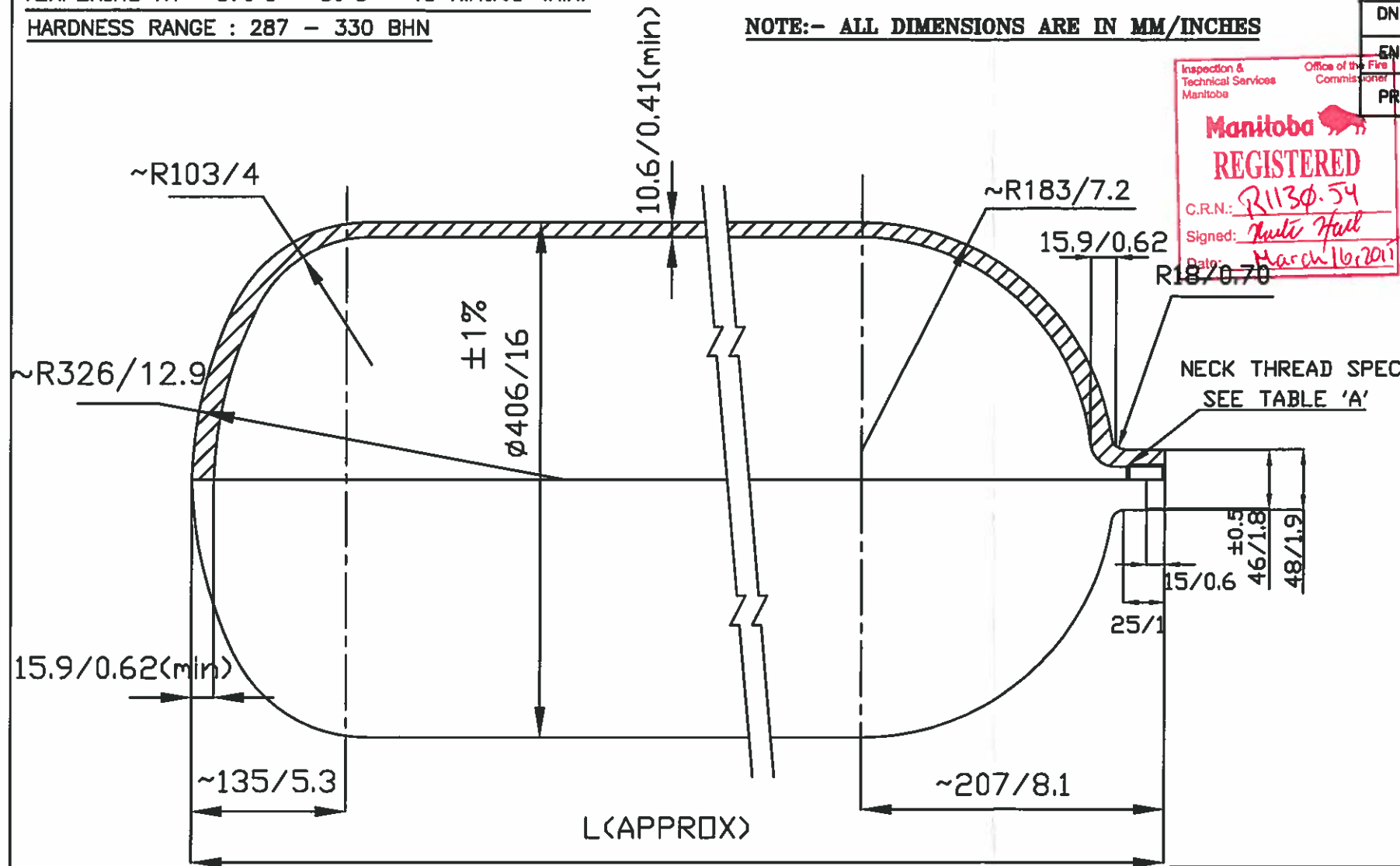
TEMPERING AT : 570°C ± 30°C - 45 Minute (Min)

HARDNESS RANGE : 287 - 330 BHN

NOTE:- ALL DIMENSIONS ARE IN MM/INCHES

THREAD SPECIFICATION TABLE-'A'							
CODE	STD.	TYPE	TAPER ON DIA	PITCH	NECK DIA(D)	NECK DIA(d)	THREAD LENGTH
NG		(3/4"-NGT)	1:16	14,TPI	48.00	46.00	18.00
DN	(DIN-477)	28.8	3:25	14,TPI	48.00	46.00	22.00
EN	EN629-1	25E	3:25	14,TPI	48.00	46.00	22.00
PR		1 1/8"12UNF-2B	-	-	48.00	46.00	19.5

This is the exclusive property of Everest Kanto Cylinder Ltd. & should not be issued or transferred to any individuals or firms use for any purpose other than intended. This should not be copied, traced, modified, sketched, printed, reproduced in any manner what so ever either or full & should be returned to Everest Kanto Cylinder Ltd. When done with.



/O	190.0	239.0/527	1820/71.66
/N	180.0	228.0/503	1730/68.12
/M	170.0	218.0/481	1645/64.77
/L	160.0	207.0/457	1555/61.23
/K	150.0	197.0/435	1465/57.68
/J	140.0	186.0/410	1380/54.34
/I	130.0	176.0/388	1290/50.79
/H	121.0	166.0/366	1219/48.0
/G	120.0	165.0/364	1205/47.45
/F	110.0	155.0/342	1115/43.90
/E	100.0	145.0/320	1025/40.36
/D	96.0	140.0/309	990/39.0
/C	90.0	134.0/296	940/37.01
/B	85.0	129.0/285	895/35.24
/A	80.0	124.0/274	850/33.47
SUFFIX TO DRG NO	NOMINAL WATER CAPACITY LTR.	TARE.WT.Kg/Lbs. (APPROX)	LENGTH'L'mm/inch (APPROX)

Item ref	Quantity	material	---	Article No./Reference
Designed by	Checked by	Approved by - date	File Name	Date
			406X10.6 ANSI NGV-2	12-04-2014
Owner	EKC		Title/Name	Scale
			406/16 x 10.6/0.41 SEAMLESS GAS CYLINDER	N.T.S.
			Drawing number	
			531E-101090	

RevNo	Revision note	Date	Checked	Approved